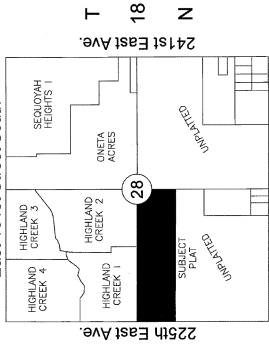


FINAL PLAT HIGHLAND RIDGE - PHASE 1

A SUBDIVISION IN WAGONER COUNTY, STATE OF OKLAHOMA
LOCATED IN SECTION 28, TOWNSHIP 18N, RANGE 15E

R 15 E
East 101st Street South



East 111th Street South
WAGONER COUNTY
LOCATION

NO SCALE

LEGAL DESCRIPTION
A CERTAIN PORTION OF THE SOUTHWEST QUARTER OF SECTION 28, TOWNSHIP 18 NORTH, RANGE 15 EAST OF THE IRON, BASE AND MERIDIAN, WAGONER COUNTY, STATE OF OKLAHOMA, SAID TRACT CONTAINING 47.0 ACRES, MORE OR LESS.

ZONINGS
R15 RESIDENTIAL SINGLE FAMILY DWELLING

SUBDIVISION DATA
5,200 LOTS IN 108 BLOCKS
TOTAL AREA: 47.0 ACRES

SETBACKS
FRONT BUILDING LINE 20'
REAR BUILDING LINE 20'
SIDE BUILDING LINE 5'

MONUMENTATION
ALL CORNERS TO BE SET 3/8" IRON PIN WITH CAP "CA 4502"

BASIS OF BEARINGS
THE BASIS OF BEARINGS FOR THIS SURVEY IS BASED ON THE BASIS OF SECTION 28, T-18-N, R-15-E, AS BEING N01°12'59"W.

FEWA FLOOD NOTE:
THIS PROPERTY IS NOT LOCATED IN A FEMA FLOODPLAIN ACCORDING TO THE APPLICABLE FEMA FIRM MAP 40145C01151 DATED SEPTEMBER 30, 2015.

NOTES
1. RESIDENTIAL LOTS ARE 7,200 SF OR LARGER.
2. ALL NEW ROAD RIGHTS-OF-WAY ARE 50' OR MORE WIDE, TO BE SHOWN AS "NEW ROAD RIGHTS-OF-WAY" ON THIS PLAT.
3. ADDRESSES SHOWN ON THIS PLAT ARE ACCURATE AS OF THE TIME THIS PLAT WAS FILED. ADDRESSES ARE SUBJECT TO CHANGE AND WILL BE SHOWN AS SUCH ON THE FINAL PLAT.
4. ALL LOTS COMPLY WITH THE FIRST ZONING CODE REQUIREMENTS.
5. SURFACE IMPROVEMENTS SHALL BE MAINTAINED BY HIGHLAND RIDGE HOME OWNERS ASSOCIATION.

ACKNOWLEDGMENTS:
I HEREBY ACKNOWLEDGE THAT THE FINAL PLAT PREPARED IN ACCORDANCE WITH THE REGULATIONS AND REQUIREMENTS AND REQUIREMENTS THAT ARE SPECIFICALLY REQUIRED OF THE OWNER, OR THE ENGINEER, OR THE SURVIVOR.

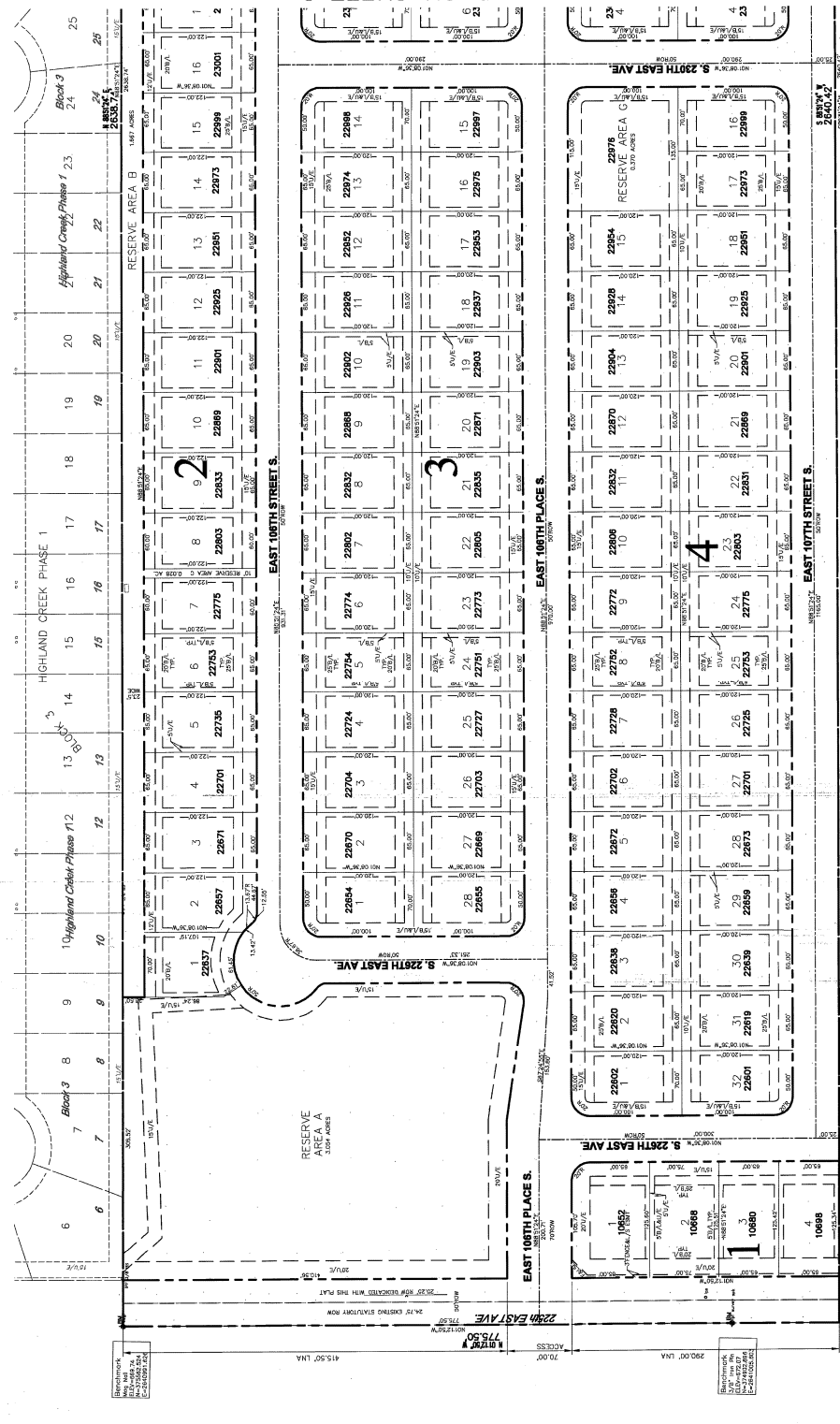
CONTRACTOR:
KATHY JONES, MANAGING MEMBER
INTEGRITY DEVELOPMENT GROUP, L.L.C.
AN OKLAHOMA LIMITED LIABILITY COMPANY

ENGINEER:
Kelly R. Kelly
JC ENGINEERING, P.C.
21438
1815

REGISTERED SURVIVOR:
JC ENGINEERING, P.C.
21438
1815

REGISTERED SURVIVOR:
BENNETT SURVEYING, INC.
P.O. BOX 1815
OKLAHOMA CITY, OKLAHOMA 73101

DATE OF PREPARATION: APRIL 27, 2023



RESERVE AREA A
3.00 ACRES

RESERVE AREA B
1.00 ACRES

RESERVE AREA C
1.00 ACRES

UTILITY PROVIDERS:
WAGONER COUNTY PWA 918-298-2331
NATURAL GAS SERVICE 918-801-8251
ELECTRICAL SERVICE 918-801-8251
WINDSTREAM 918-250-7716
CABLE SERVICE 918-298-4644
COX COMMUNICATIONS 918-298-6644

ENGINEER:
JC ENGINEERING, P.C.
1035 N 177th East Ave
Owasso, OK 74757
(918) 935-0350
Cert. of Authorization No. 4502
Renewed Date: June 30, 2024

OWNER/DEVELOPER:
INTEGRITY DEVELOPMENT GROUP, L.L.C.
3769 S. Elm Pl
Broken Arrow, OK 74011
(918) 893-2353

LEGEND
--- ACCESS PERMITTED
--- B/L BUILDING SETBACK LINE
--- LAK LANDSCAPE EASEMENT
--- FALSE FENCE & LANDSCAPE EASEMENT
--- ROW RIGHT-OF-WAY
--- LOT LINE
--- CENTER LINE
--- ADDRESS

UTILITY PROVIDERS:
WAGONER COUNTY PWA 918-298-2331
NATURAL GAS SERVICE 918-801-8251
ELECTRICAL SERVICE 918-801-8251
WINDSTREAM 918-250-7716
CABLE SERVICE 918-298-4644
COX COMMUNICATIONS 918-298-6644

ENGINEER:
JC ENGINEERING, P.C.
1035 N 177th East Ave
Owasso, OK 74757
(918) 935-0350
Cert. of Authorization No. 4502
Renewed Date: June 30, 2024

OWNER/DEVELOPER:
INTEGRITY DEVELOPMENT GROUP, L.L.C.
3769 S. Elm Pl
Broken Arrow, OK 74011
(918) 893-2353

LEGEND
--- ACCESS PERMITTED
--- B/L BUILDING SETBACK LINE
--- LAK LANDSCAPE EASEMENT
--- FALSE FENCE & LANDSCAPE EASEMENT
--- ROW RIGHT-OF-WAY
--- LOT LINE
--- CENTER LINE
--- ADDRESS

UTILITY PROVIDERS:
WAGONER COUNTY PWA 918-298-2331
NATURAL GAS SERVICE 918-801-8251
ELECTRICAL SERVICE 918-801-8251
WINDSTREAM 918-250-7716
CABLE SERVICE 918-298-4644
COX COMMUNICATIONS 918-298-6644

ENGINEER:
JC ENGINEERING, P.C.
1035 N 177th East Ave
Owasso, OK 74757
(918) 935-0350
Cert. of Authorization No. 4502
Renewed Date: June 30, 2024

OWNER/DEVELOPER:
INTEGRITY DEVELOPMENT GROUP, L.L.C.
3769 S. Elm Pl
Broken Arrow, OK 74011
(918) 893-2353

LEGEND
--- ACCESS PERMITTED
--- B/L BUILDING SETBACK LINE
--- LAK LANDSCAPE EASEMENT
--- FALSE FENCE & LANDSCAPE EASEMENT
--- ROW RIGHT-OF-WAY
--- LOT LINE
--- CENTER LINE
--- ADDRESS

UTILITY PROVIDERS:
WAGONER COUNTY PWA 918-298-2331
NATURAL GAS SERVICE 918-801-8251
ELECTRICAL SERVICE 918-801-8251
WINDSTREAM 918-250-7716
CABLE SERVICE 918-298-4644
COX COMMUNICATIONS 918-298-6644

ENGINEER:
JC ENGINEERING, P.C.
1035 N 177th East Ave
Owasso, OK 74757
(918) 935-0350
Cert. of Authorization No. 4502
Renewed Date: June 30, 2024

OWNER/DEVELOPER:
INTEGRITY DEVELOPMENT GROUP, L.L.C.
3769 S. Elm Pl
Broken Arrow, OK 74011
(918) 893-2353

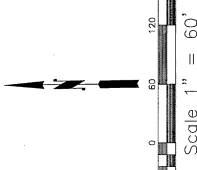
LEGEND
--- ACCESS PERMITTED
--- B/L BUILDING SETBACK LINE
--- LAK LANDSCAPE EASEMENT
--- FALSE FENCE & LANDSCAPE EASEMENT
--- ROW RIGHT-OF-WAY
--- LOT LINE
--- CENTER LINE
--- ADDRESS

UTILITY PROVIDERS:
WAGONER COUNTY PWA 918-298-2331
NATURAL GAS SERVICE 918-801-8251
ELECTRICAL SERVICE 918-801-8251
WINDSTREAM 918-250-7716
CABLE SERVICE 918-298-4644
COX COMMUNICATIONS 918-298-6644

ENGINEER:
JC ENGINEERING, P.C.
1035 N 177th East Ave
Owasso, OK 74757
(918) 935-0350
Cert. of Authorization No. 4502
Renewed Date: June 30, 2024

OWNER/DEVELOPER:
INTEGRITY DEVELOPMENT GROUP, L.L.C.
3769 S. Elm Pl
Broken Arrow, OK 74011
(918) 893-2353

CONTINUED ON SHEET 2



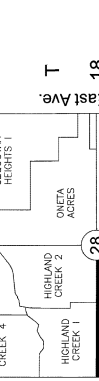
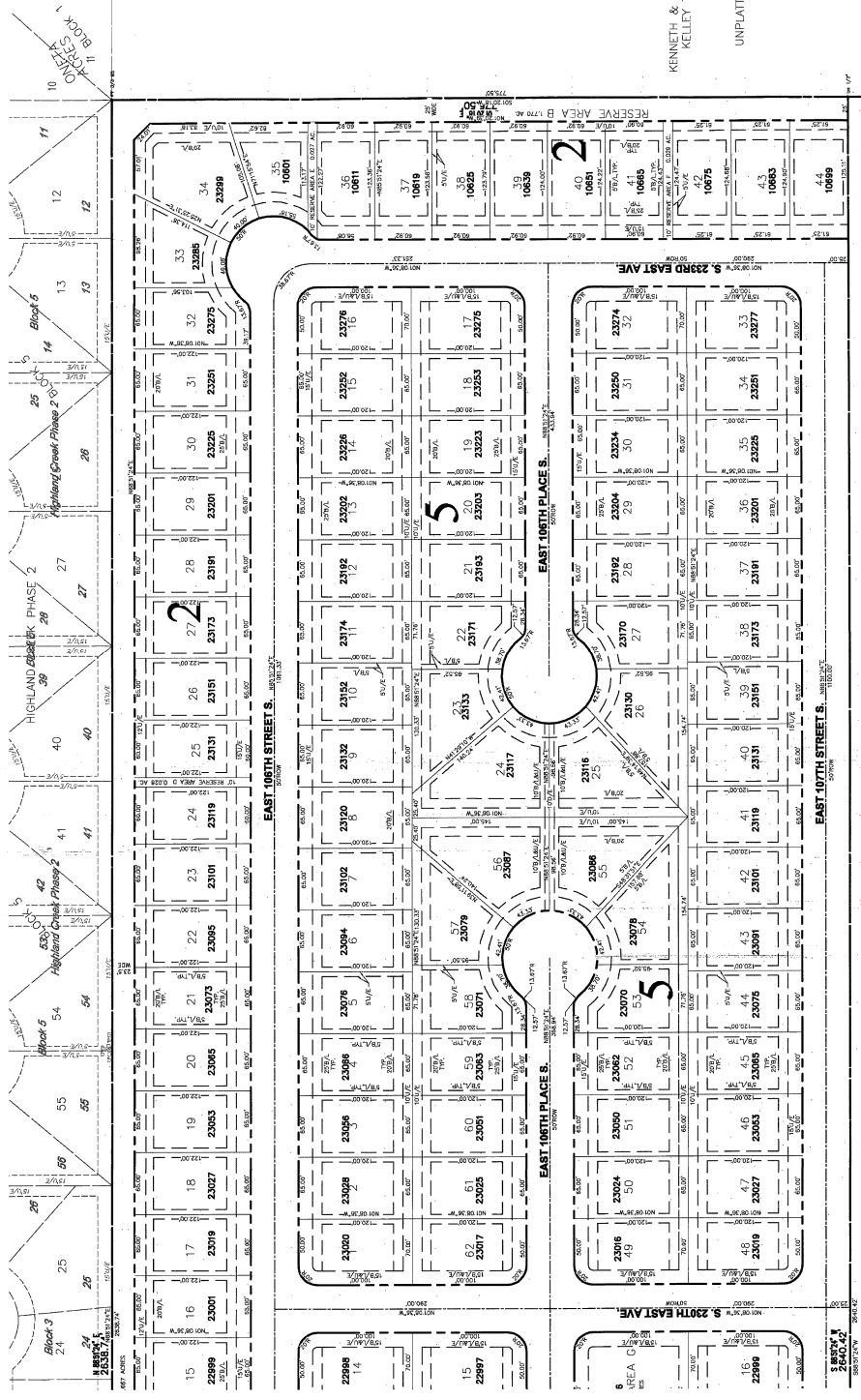
Utility Statement
THE UNDERGROUND UTILITIES SHOWN HAVE BEEN LOCATED FROM FIELD SURVEY INFORMATION AND EXISTING DRAWINGS. THE SURVIVOR MAKES NO GUARANTEE THAT THE UNDERGROUND UTILITIES SHOWN ARE IN THE EXACT LOCATION INDICATED. THE SURVIVOR DOES NOT WARRANT THAT THE UNDERGROUND UTILITIES SHOWN ARE IN THE EXACT LOCATION INDICATED. THE SURVIVOR DOES NOT WARRANT THAT THE UNDERGROUND UTILITIES SHOWN ARE IN THE EXACT LOCATION INDICATED. THE SURVIVOR DOES NOT WARRANT THAT THE UNDERGROUND UTILITIES SHOWN ARE IN THE EXACT LOCATION INDICATED. THE SURVIVOR DOES NOT WARRANT THAT THE UNDERGROUND UTILITIES SHOWN ARE IN THE EXACT LOCATION INDICATED.



BEFORE YOU DIG
CALL OKIE
1-800-522-5846

HIGHLAND RIDGE - PHASE 1

A SUBDIVISION IN WAGONER COUNTY, STATE OF OKLAHOMA
 LOCATED IN SECTION 28, TOWNSHIP 18N, RANGE 15E



LEGAL DESCRIPTION
 THE SOUTHWEST QUARTER OF SECTION 28, TOWNSHIP 18 NORTH, RANGE 15 EAST OF THE OKLAHOMA MERIDIAN, SAID TRACT CONTAINING 47.0 ACRES, MORE OR LESS.

ZONING
 RESIDENTIAL SINGLE FAMILY DWELLING

SUBDIVISION DATA
 170 LOTS IN 5 BLOCKS
 TOTAL AREA: 47.0 ACRES

SETBACKS
 FRONT BUILDING LINE 20'
 REAR BUILDING LINE 25'

MONUMENTATION
 ALL CORNERS TO BE A SET 3/8" IRON PIN WITH CAP "CA 452"

BASIS OF BEARINGS
 THE BASIS OF BEARINGS FOR THIS SURVEY IS BASED ON THE NORTH 125° 50' 00" W. LINE OF SECTION 28, T. 18-N., R. 15-E., AS BEING 101125° 50' 00"

FEMA FLOOD NOTE:
 THIS PROPERTY IS NOT LOCATED IN A FEMA FLOODPLAIN ACCORDING TO THE APPLICABLE FEMA FIRM MAP 4014500115J DATED SEPTEMBER 30, 2014.

NOTES:
 1. RESIDENTIAL LOTS ARE 7,300 SF OR LARGER.
 2. ALL NEW ROAD RIGHTS-OF-WAY ARE 50' OR MORE WIDE, TO BE SHOWN ON THIS PLAT AND ACCURATE AS OF THE TIME THIS PLAT WAS FILED. ADDRESSES ARE SUBJECT TO CHANGE AND WILL BE DETERMINED BY THE LOCAL GOVERNMENT.
 3. ALL LOTS COMPLY WITH THE RES ZONING CODE REQUIREMENTS.
 4. SURFACE IMPROVEMENTS FOR STORMWATER DETENTION, SURFACE IMPROVEMENTS SHALL BE MAINTAINED BY HIGHLAND RIDGE HOME OWNERS ASSOCIATION.

ACKNOWLEDGEMENTS:
 WE, THE UNDERSIGNED, HEREBY ACKNOWLEDGE THAT THE FINAL PLAT DESCRIBED HEREON IS HIGHLAND RIDGE PHASE 1, A SUBDIVISION OF WAGONER COUNTY, OKLAHOMA, AS RELATED TO SAID REGULATIONS OF WAGONER COUNTY, OKLAHOMA, AS RELATED TO SAID REGULATIONS OF WAGONER COUNTY, OKLAHOMA, AS REQUIRED BY THE ENGINEER OR THE SURVEYOR.

DATE: 06/20/24

BY: [Signature]

BY: [Signature]

BY: [Signature]

BY: [Signature]

BY: [Signature]

BY: [Signature]

BY: [Signature]

BY: [Signature]

BY: [Signature]

BY: [Signature]

BY: [Signature]

BY: [Signature]

BY: [Signature]

BY: [Signature]

BY: [Signature]

BY: [Signature]

BY: [Signature]

BY: [Signature]

BY: [Signature]

BY: [Signature]

BY: [Signature]

BY: [Signature]

BY: [Signature]

BY: [Signature]

BY: [Signature]

BY: [Signature]

BY: [Signature]

BY: [Signature]

BY: [Signature]

UTILITY PROVIDERS:
 NATIONAL GAS SERVICE COMPANY 918-258-2333
 ELECTRICAL SERVICE 918-831-8081
 WINDSTREAM 918-344-9327
 CABLE SERVICE 918-286-1644
 COX COMMUNICATIONS 918-286-1644

OWNER/DEVELOPER:
 INTEGRITY DEVELOPMENT GROUP, L.L.C.
 3768 S. Elm Pl.
 Broken Arrow, OK 74011
 (918) 685-2655

ENGINEER:
 BENNETT SURVEYING, INC.
 10035 N 177th East Ave
 Cooubeau, Oklahoma
 (918) 335-0350
 Cert. of Authorization No. 5869
 Renewal Date: June 30, 2024

SURVEYOR:
 BENNETT SURVEYING, INC.
 10035 N 177th East Ave
 Cooubeau, Oklahoma
 (918) 335-0350
 Cert. of Authorization No. 5869
 Renewal Date: June 30, 2024

LEGEND
 --- 3/4" ACCESS PERMITTED LINE
 --- 5/8" BUILDING PERMITTED LINE
 --- 1" LMA
 --- 1 1/2" LMA
 --- 2" LMA
 --- 3" LMA
 --- 4" LMA
 --- 6" LMA
 --- 8" LMA
 --- 10" LMA
 --- 12" LMA
 --- 15" LMA
 --- 18" LMA
 --- 20" LMA
 --- 24" LMA
 --- 30" LMA
 --- 36" LMA
 --- 42" LMA
 --- 48" LMA
 --- 54" LMA
 --- 60" LMA
 --- 66" LMA
 --- 72" LMA
 --- 78" LMA
 --- 84" LMA
 --- 90" LMA
 --- 96" LMA
 --- 102" LMA
 --- 108" LMA
 --- 114" LMA
 --- 120" LMA
 --- 126" LMA
 --- 132" LMA
 --- 138" LMA
 --- 144" LMA
 --- 150" LMA
 --- 156" LMA
 --- 162" LMA
 --- 168" LMA
 --- 174" LMA
 --- 180" LMA
 --- 186" LMA
 --- 192" LMA
 --- 198" LMA
 --- 204" LMA
 --- 210" LMA
 --- 216" LMA
 --- 222" LMA
 --- 228" LMA
 --- 234" LMA
 --- 240" LMA
 --- 246" LMA
 --- 252" LMA
 --- 258" LMA
 --- 264" LMA
 --- 270" LMA
 --- 276" LMA
 --- 282" LMA
 --- 288" LMA
 --- 294" LMA
 --- 300" LMA
 --- 306" LMA
 --- 312" LMA
 --- 318" LMA
 --- 324" LMA
 --- 330" LMA
 --- 336" LMA
 --- 342" LMA
 --- 348" LMA
 --- 354" LMA
 --- 360" LMA
 --- 366" LMA
 --- 372" LMA
 --- 378" LMA
 --- 384" LMA
 --- 390" LMA
 --- 396" LMA
 --- 402" LMA
 --- 408" LMA
 --- 414" LMA
 --- 420" LMA
 --- 426" LMA
 --- 432" LMA
 --- 438" LMA
 --- 444" LMA
 --- 450" LMA
 --- 456" LMA
 --- 462" LMA
 --- 468" LMA
 --- 474" LMA
 --- 480" LMA
 --- 486" LMA
 --- 492" LMA
 --- 498" LMA
 --- 504" LMA
 --- 510" LMA
 --- 516" LMA
 --- 522" LMA
 --- 528" LMA
 --- 534" LMA
 --- 540" LMA
 --- 546" LMA
 --- 552" LMA
 --- 558" LMA
 --- 564" LMA
 --- 570" LMA
 --- 576" LMA
 --- 582" LMA
 --- 588" LMA
 --- 594" LMA
 --- 600" LMA
 --- 606" LMA
 --- 612" LMA
 --- 618" LMA
 --- 624" LMA
 --- 630" LMA
 --- 636" LMA
 --- 642" LMA
 --- 648" LMA
 --- 654" LMA
 --- 660" LMA
 --- 666" LMA
 --- 672" LMA
 --- 678" LMA
 --- 684" LMA
 --- 690" LMA
 --- 696" LMA
 --- 702" LMA
 --- 708" LMA
 --- 714" LMA
 --- 720" LMA
 --- 726" LMA
 --- 732" LMA
 --- 738" LMA
 --- 744" LMA
 --- 750" LMA
 --- 756" LMA
 --- 762" LMA
 --- 768" LMA
 --- 774" LMA
 --- 780" LMA
 --- 786" LMA
 --- 792" LMA
 --- 798" LMA
 --- 804" LMA
 --- 810" LMA
 --- 816" LMA
 --- 822" LMA
 --- 828" LMA
 --- 834" LMA
 --- 840" LMA
 --- 846" LMA
 --- 852" LMA
 --- 858" LMA
 --- 864" LMA
 --- 870" LMA
 --- 876" LMA
 --- 882" LMA
 --- 888" LMA
 --- 894" LMA
 --- 900" LMA
 --- 906" LMA
 --- 912" LMA
 --- 918" LMA
 --- 924" LMA
 --- 930" LMA
 --- 936" LMA
 --- 942" LMA
 --- 948" LMA
 --- 954" LMA
 --- 960" LMA
 --- 966" LMA
 --- 972" LMA
 --- 978" LMA
 --- 984" LMA
 --- 990" LMA
 --- 996" LMA
 --- 1002" LMA
 --- 1008" LMA
 --- 1014" LMA
 --- 1020" LMA
 --- 1026" LMA
 --- 1032" LMA
 --- 1038" LMA
 --- 1044" LMA
 --- 1050" LMA
 --- 1056" LMA
 --- 1062" LMA
 --- 1068" LMA
 --- 1074" LMA
 --- 1080" LMA
 --- 1086" LMA
 --- 1092" LMA
 --- 1098" LMA
 --- 1104" LMA
 --- 1110" LMA
 --- 1116" LMA
 --- 1122" LMA
 --- 1128" LMA
 --- 1134" LMA
 --- 1140" LMA
 --- 1146" LMA
 --- 1152" LMA
 --- 1158" LMA
 --- 1164" LMA
 --- 1170" LMA
 --- 1176" LMA
 --- 1182" LMA
 --- 1188" LMA
 --- 1194" LMA
 --- 1200" LMA
 --- 1206" LMA
 --- 1212" LMA
 --- 1218" LMA
 --- 1224" LMA
 --- 1230" LMA
 --- 1236" LMA
 --- 1242" LMA
 --- 1248" LMA
 --- 1254" LMA
 --- 1260" LMA
 --- 1266" LMA
 --- 1272" LMA
 --- 1278" LMA
 --- 1284" LMA
 --- 1290" LMA
 --- 1296" LMA
 --- 1302" LMA
 --- 1308" LMA
 --- 1314" LMA
 --- 1320" LMA
 --- 1326" LMA
 --- 1332" LMA
 --- 1338" LMA
 --- 1344" LMA
 --- 1350" LMA
 --- 1356" LMA
 --- 1362" LMA
 --- 1368" LMA
 --- 1374" LMA
 --- 1380" LMA
 --- 1386" LMA
 --- 1392" LMA
 --- 1398" LMA
 --- 1404" LMA
 --- 1410" LMA
 --- 1416" LMA
 --- 1422" LMA
 --- 1428" LMA
 --- 1434" LMA
 --- 1440" LMA
 --- 1446" LMA
 --- 1452" LMA
 --- 1458" LMA
 --- 1464" LMA
 --- 1470" LMA
 --- 1476" LMA
 --- 1482" LMA
 --- 1488" LMA
 --- 1494" LMA
 --- 1500" LMA
 --- 1506" LMA
 --- 1512" LMA
 --- 1518" LMA
 --- 1524" LMA
 --- 1530" LMA
 --- 1536" LMA
 --- 1542" LMA
 --- 1548" LMA
 --- 1554" LMA
 --- 1560" LMA
 --- 1566" LMA
 --- 1572" LMA
 --- 1578" LMA
 --- 1584" LMA
 --- 1590" LMA
 --- 1596" LMA
 --- 1602" LMA
 --- 1608" LMA
 --- 1614" LMA
 --- 1620" LMA
 --- 1626" LMA
 --- 1632" LMA
 --- 1638" LMA
 --- 1644" LMA
 --- 1650" LMA
 --- 1656" LMA
 --- 1662" LMA
 --- 1668" LMA
 --- 1674" LMA
 --- 1680" LMA
 --- 1686" LMA
 --- 1692" LMA
 --- 1698" LMA
 --- 1704" LMA
 --- 1710" LMA
 --- 1716" LMA
 --- 1722" LMA
 --- 1728" LMA
 --- 1734" LMA
 --- 1740" LMA
 --- 1746" LMA
 --- 1752" LMA
 --- 1758" LMA
 --- 1764" LMA
 --- 1770" LMA
 --- 1776" LMA
 --- 1782" LMA
 --- 1788" LMA
 --- 1794" LMA
 --- 1800" LMA
 --- 1806" LMA
 --- 1812" LMA
 --- 1818" LMA
 --- 1824" LMA
 --- 1830" LMA
 --- 1836" LMA
 --- 1842" LMA
 --- 1848" LMA
 --- 1854" LMA
 --- 1860" LMA
 --- 1866" LMA
 --- 1872" LMA
 --- 1878" LMA
 --- 1884" LMA
 --- 1890" LMA
 --- 1896" LMA
 --- 1902" LMA
 --- 1908" LMA
 --- 1914" LMA
 --- 1920" LMA
 --- 1926" LMA
 --- 1932" LMA
 --- 1938" LMA
 --- 1944" LMA
 --- 1950" LMA
 --- 1956" LMA
 --- 1962" LMA
 --- 1968" LMA
 --- 1974" LMA
 --- 1980" LMA
 --- 1986" LMA
 --- 1992" LMA
 --- 1998" LMA
 --- 2004" LMA
 --- 2010" LMA
 --- 2016" LMA
 --- 2022" LMA
 --- 2028" LMA
 --- 2034" LMA
 --- 2040" LMA
 --- 2046" LMA
 --- 2052" LMA
 --- 2058" LMA
 --- 2064" LMA
 --- 2070" LMA
 --- 2076" LMA
 --- 2082" LMA
 --- 2088" LMA
 --- 2094" LMA
 --- 2100" LMA
 --- 2106" LMA
 --- 2112" LMA
 --- 2118" LMA
 --- 2124" LMA
 --- 2130" LMA
 --- 2136" LMA
 --- 2142" LMA
 --- 2148" LMA
 --- 2154" LMA
 --- 2160" LMA
 --- 2166" LMA
 --- 2172" LMA
 --- 2178" LMA
 --- 2184" LMA
 --- 2190" LMA
 --- 2196" LMA
 --- 2202" LMA
 --- 2208" LMA
 --- 2214" LMA
 --- 2220" LMA
 --- 2226" LMA
 --- 2232" LMA
 --- 2238" LMA
 --- 2244" LMA
 --- 2250" LMA
 --- 2256" LMA
 --- 2262" LMA
 --- 2268" LMA
 --- 2274" LMA
 --- 2280" LMA
 --- 2286" LMA
 --- 2292" LMA
 --- 2298" LMA
 --- 2304" LMA
 --- 2310" LMA
 --- 2316" LMA
 --- 2322" LMA
 --- 2328" LMA
 --- 2334" LMA
 --- 2340" LMA
 --- 2346" LMA
 --- 2352" LMA
 --- 2358" LMA
 --- 2364" LMA
 --- 2370" LMA
 --- 2376" LMA
 --- 2382" LMA
 --- 2388" LMA
 --- 2394" LMA
 --- 2400" LMA
 --- 2406" LMA
 --- 2412" LMA
 --- 2418" LMA
 --- 2424" LMA
 --- 2430" LMA
 --- 2436" LMA
 --- 2442" LMA
 --- 2448" LMA
 --- 2454" LMA
 --- 2460" LMA
 --- 2466" LMA
 --- 2472" LMA
 --- 2478" LMA
 --- 2484" LMA
 --- 2490" LMA
 --- 2496" LMA
 --- 2502" LMA
 --- 2508" LMA
 --- 2514" LMA
 --- 2520" LMA
 --- 2526" LMA
 --- 2532" LMA
 --- 2538" LMA
 --- 2544" LMA
 --- 2550" LMA
 --- 2556" LMA
 --- 2562" LMA
 --- 2568" LMA
 --- 2574" LMA
 --- 2580" LMA
 --- 2586" LMA
 --- 2592" LMA
 --- 2598" LMA
 --- 2604" LMA
 --- 2610" LMA
 --- 2616" LMA
 --- 2622" LMA
 --- 2628" LMA
 --- 2634" LMA
 --- 2640" LMA
 --- 2646" LMA
 --- 2652" LMA
 --- 2658" LMA
 --- 2664" LMA
 --- 2670" LMA
 --- 2676" LMA
 --- 2682" LMA
 --- 2688" LMA
 --- 2694" LMA
 --- 2700" LMA
 --- 2706" LMA
 --- 2712" LMA
 --- 2718" LMA
 --- 2724" LMA
 --- 2730" LMA
 --- 2736" LMA
 --- 2742" LMA
 --- 2748" LMA
 --- 2754" LMA
 --- 2760" LMA
 --- 2766" LMA
 --- 2772" LMA
 --- 2778" LMA
 --- 2784" LMA
 --- 2790" LMA
 --- 2796" LMA
 --- 2802" LMA
 --- 2808" LMA
 --- 2814" LMA
 --- 2820" LMA
 --- 2826" LMA
 --- 2832" LMA
 --- 2838" LMA
 --- 2844" LMA
 --- 2850" LMA
 --- 2856" LMA
 --- 2862" LMA
 --- 2868" LMA
 --- 2874" LMA
 --- 2880" LMA
 --- 2886" LMA
 --- 2892" LMA
 --- 2898" LMA
 --- 2904" LMA
 --- 2910" LMA
 --- 2916" LMA
 --- 2922" LMA
 --- 2928" LMA
 --- 2934" LMA
 --- 2940" LMA
 --- 2946" LMA
 --- 2952" LMA
 --- 2958" LMA
 --- 2964" LMA
 --- 2970" LMA
 --- 2976" LMA
 --- 2982" LMA
 --- 2988" LMA
 --- 2994" LMA
 --- 3000" LMA
 --- 3006" LMA
 --- 3012" LMA
 --- 3018" LMA
 --- 3024" LMA
 --- 3030" LMA
 --- 3036" LMA
 --- 3042" LMA
 --- 3048" LMA
 --- 3054" LMA
 --- 3060" LMA
 --- 3066" LMA
 --- 3072" LMA
 --- 3078" LMA
 --- 3084" LMA
 --- 3090" LMA
 --- 3096" LMA
 --- 3102" LMA
 --- 3108" LMA
 --- 3114" LMA
 --- 3120" LMA
 --- 3126" LMA
 --- 3132" LMA
 --- 3138" LMA
 --- 3144" LMA
 --- 3150" LMA
 --- 3156" LMA
 --- 3162" LMA
 --- 3168" LMA
 --- 3174" LMA
 --- 3180" LMA
 --- 3186" LMA
 --- 3192" LMA
 --- 3198" LMA
 --- 3204" LMA
 --- 3210" LMA
 --- 3216" LMA
 --- 3222" LMA
 --- 3228" LMA
 --- 3234" LMA
 --- 3240" LMA
 --- 3246" LMA
 --- 3252" LMA
 --- 3258" LMA
 --- 3264" LMA
 --- 3270" LMA
 --- 3276" LMA
 --- 3282" LMA
 --- 3288" LMA
 --- 3294" LMA
 --- 3300" LMA
 --- 3306" LMA
 --- 3312" LMA
 --- 3318" LMA
 --- 3324" LMA
 --- 3330" LMA
 --- 3336" LMA
 --- 3342" LMA
 --- 3348" LMA
 --- 3354" LMA
 --- 3360" LMA
 --- 3366" LMA
 --- 3372" LMA
 --- 3378" LMA
 --- 3384" LMA
 --- 3390" LMA
 --- 3396" LMA
 --- 3402" LMA
 --- 3408" LMA
 --- 3414" LMA
 --- 3420" LMA
 --- 3426" LMA
 --- 3432" LMA
 --- 3438" LMA
 --- 3444" LMA
 --- 3450" LMA
 --- 3456" LMA
 --- 3462" LMA
 --- 3468" LMA
 --- 3474" LMA
 --- 3480" LMA
 --- 3486" LMA
 --- 3492" LMA
 --- 3498" LMA
 --- 3504" LMA
 --- 3510" LMA
 --- 3516" LMA
 --- 3522" LMA
 --- 3528" LMA
 --- 3534" LMA
 --- 3540" LMA
 --- 3546" LMA
 --- 3552" LMA
 --- 3558" LMA
 --- 3564" LMA
 --- 3570" LMA
 --- 3576" LMA
 --- 3582" LMA
 --- 3588" LMA
 --- 3594" LMA
 --- 3600" LMA
 --- 3606" LMA
 --- 3612" LMA
 --- 3618" LMA
 --- 3624" LMA
 --- 3630" LMA
 --- 3636" LMA
 --- 3642" LMA
 --- 3648" LMA
 --- 3654" LMA
 --- 3660" LMA
 --- 3666" LMA
 --- 3672" LMA
 --- 3678" LMA
 --- 3684" LMA
 --- 3690" LMA
 --- 3696" LMA
 --- 3702" LMA
 --- 3708" LMA
 --- 3714" LMA
 --- 3720" LMA
 --- 3726" LMA
 --- 3732" LMA
 --- 3738" LMA
 --- 3744" LMA
 --- 3750" LMA
 --- 3756" LMA
 --- 3762" LMA
 --- 3768" LMA
 --- 3774" LMA
 --- 3780" LMA
 --- 3786" LMA
 --- 3792" LMA
 --- 3798" LMA
 --- 3804" LMA
 --- 3810" LMA
 --- 3816" LMA
 --- 3822" LMA
 --- 3828" LMA
 --- 3834" LMA
 --- 3840" LMA
 --- 3846" LMA
 --- 3852" LMA
 --- 3858" LMA
 --- 3864" LMA
 --- 3870" LMA
 --- 3876" LMA
 --- 3882" LMA
 --- 3888" LMA
 --- 3894" LMA
 --- 3900" LMA
 --- 3906" LMA
 --- 3912" LMA
 --- 3918" LMA
 --- 3924" LMA
 --- 3930" LMA
 --- 3936" LMA
 --- 3942" LMA
 --- 3948" LMA
 --- 3954" LMA
 --- 3960" LMA
 --- 3966" LMA
 --- 3972" LMA
 --- 3978" LMA
 --- 3984" LMA
 --- 3990" LMA
 --- 3996" LMA
 --- 4002" LMA
 --- 4008" LMA
 --- 4014" LMA
 --- 4020" LMA
 --- 4026" LMA
 --- 4032" LMA
 --- 4038" LMA
 --- 4044" LMA
 --- 4050" LMA
 --- 4056" LMA
 --- 4062" LMA
 --- 4068" LMA
 --- 4074" LMA
 --- 4080" LMA
 --- 4086" LMA
 --- 4092" LMA
 --- 4098" LMA
 --- 4104" L

